



9MIL-INDUSTA



**INDUSTRIAL SOLUTIONS
REDEFINING INDUSTRY
BOUNDARIES**





Transparency

Reliability

Agility

ABOUT 9MIL-INDUSTA

Nine Million Co. Ltd. is a Saudi based company specilized in the construction field partnered with **Industa** a Spanish based company expert in on-site machining, Steel fabrication, and metrology since 1996.



Together, **Nine Million** and **Industa** are not just building infrastructure—we are engineering the future. Our joint venture embodies the bold spirit of Saudi Vision 2030, fusing Saudi Arabia’s unparalleled construction leadership with Spain’s precision metal-mechanical innovation.

OUR MISSIONS

Our mission at **9Mil – INDUSTA** is to deliver reliable, high-precision industrial and engineering solutions that support complex and mission-critical projects across the Kingdom of Saudi Arabia, combining strong local execution with international technical expertise while maintaining the highest standards of quality, safety, and performance.

01. Advanced Industrial Solutions

Deliver high-precision industrial and engineering solutions supporting complex projects across Saudi Arabia, including on-site machining, steel fabrication, welding, assemblies, and metrology.

02. Quality and Compliance

Execute all works with strict adherence to international quality, safety, and ISO-certified standards, ensuring reliability and long-term performance.

03. Trusted Industrial Partnership

By integrating strong local execution with global industrial expertise, 9Mil – INDUSTA delivers technically tailored solutions that enhance efficiency and support large-scale projects aligned with Saudi Vision 2030.

AREA OF EXPERTISE

9Mil – INDUSTA delivers specialized industrial engineering services supporting complex projects with precision, reliability, and international standards.

01. Welding & Steel construction



Execution of certified welding and steel construction works for structural and industrial applications, ensuring high strength, precision, and full compliance with international quality and safety standards.

02. On-Site Machining



9Mil-INDUSTA performs any type of machining on site (turning, milling, boring, drilling, grinding, etc...), without limitation and adapting our equipment to each particular requirement, giving solutions to complex problems.

03. Steel Fabrication&Assemblies



Design, fabrication, and assembly of steel structures and components, ranging from simple elements to complex mechanical assemblies, executed in accordance with project specifications and international quality standards.

04. Metrology

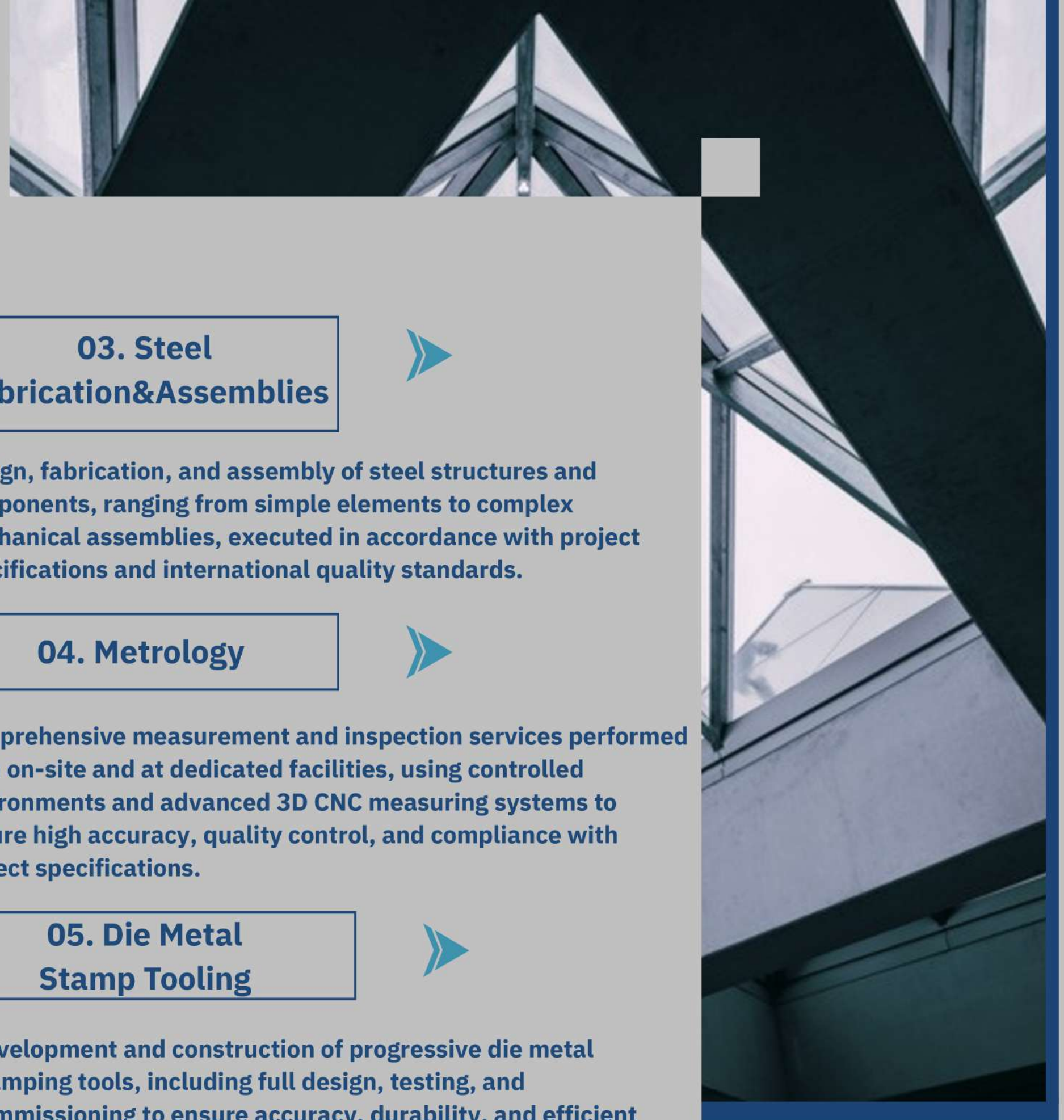


Comprehensive measurement and inspection services performed both on-site and at dedicated facilities, using controlled environments and advanced 3D CNC measuring systems to ensure high accuracy, quality control, and compliance with project specifications.

05. Die Metal Stamp Tooling



Development and construction of progressive die metal stamping tools, including full design, testing, and commissioning to ensure accuracy, durability, and efficient production performance.



ON-SITE MACHINING

9MIL-INDUSTA delivers comprehensive on-site machining — turning, milling, boring, drilling, and grinding — performed directly at project locations.

Our adaptable equipment and expert engineering teams ensure fast, reliable solutions for complex technical requirements.



ON-SITE MACHINING

9Mil – INDUSTA supports a wide range of industrial sectors requiring high-precision on-site machining and reliable technical execution:

Shipping Industries

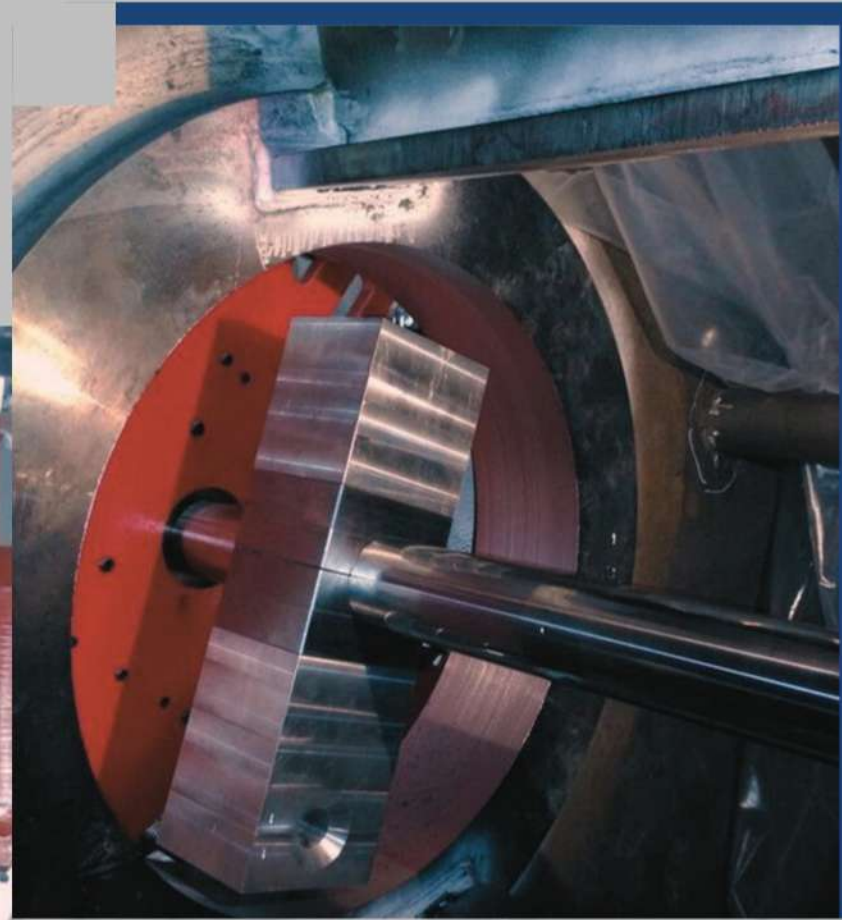
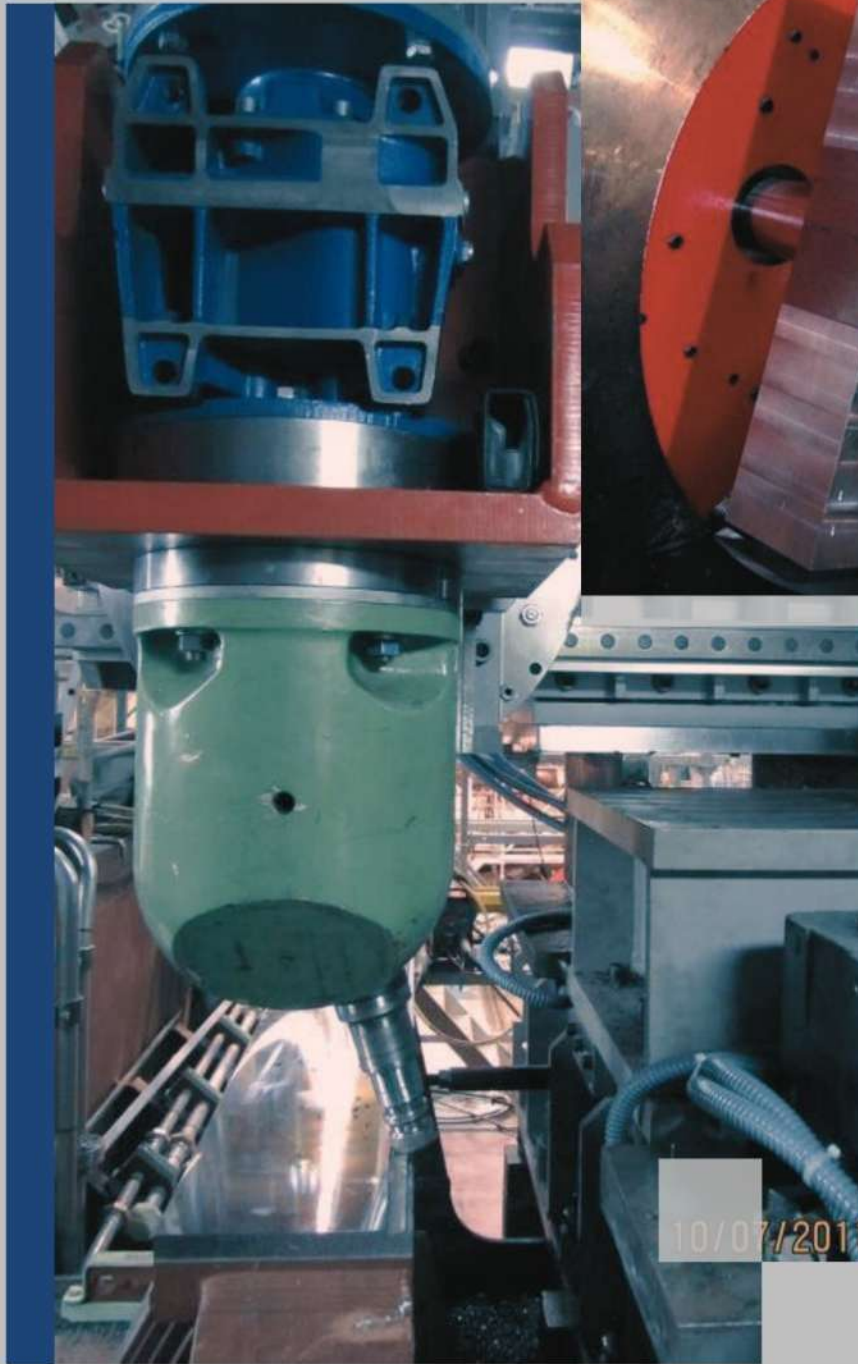
Iron & Steel Industries

Amusement Industries

Automotive Industries

Paper Industries

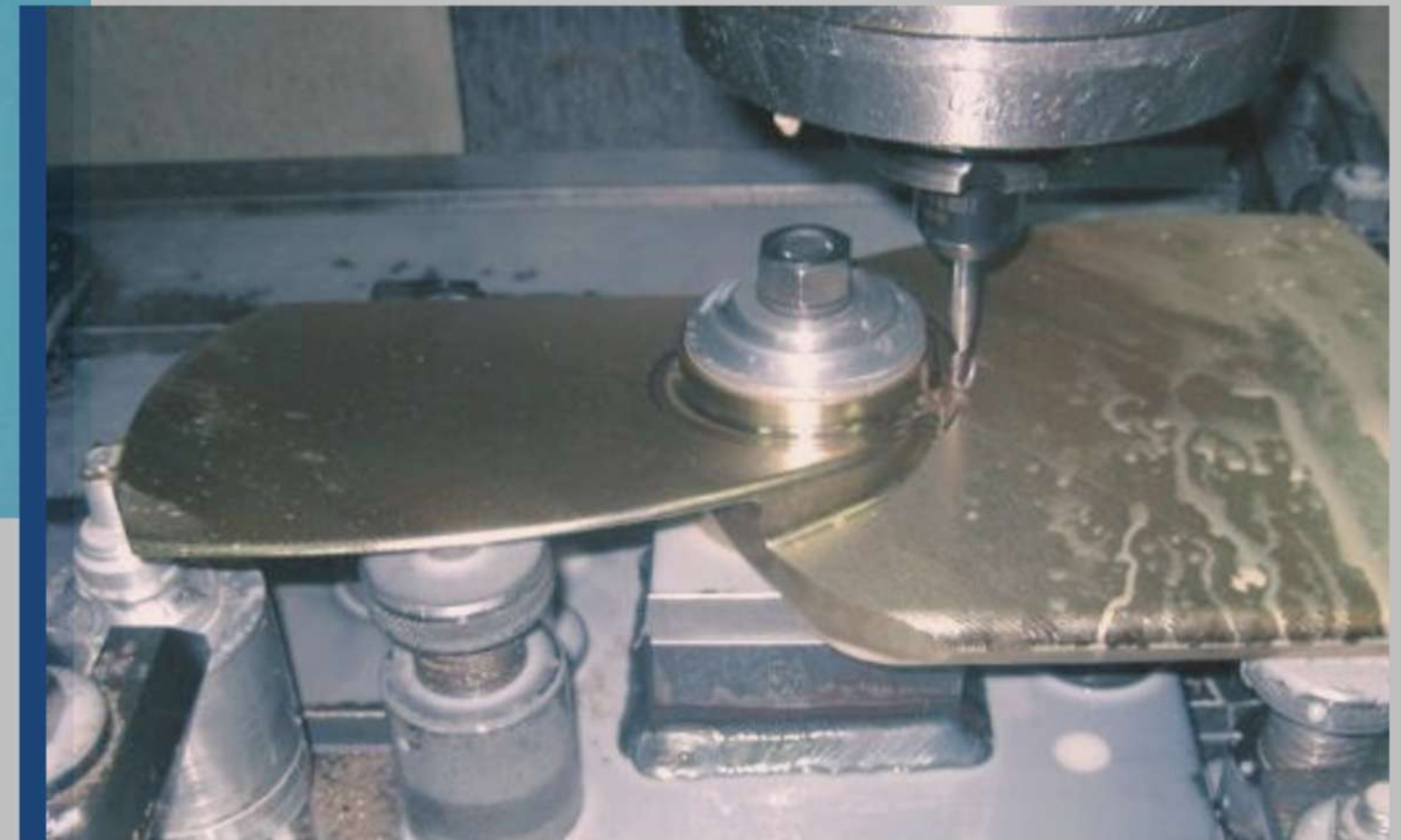
Energy Sector



PRECISIONMACHINING

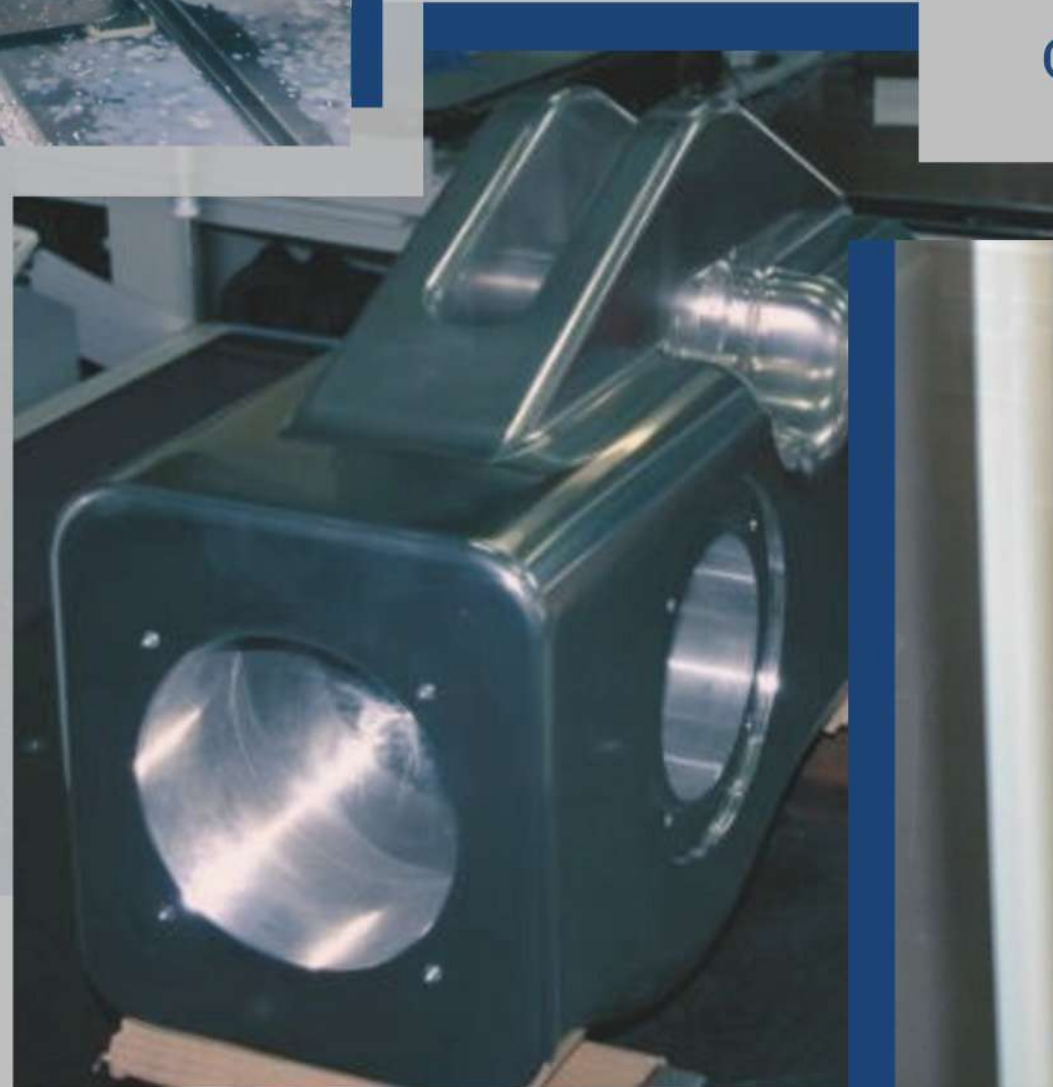
We deliver high-precision machining solutions tailored to complex industrial requirements.

Our advanced equipment and skilled engineering teams ensure accuracy, reliability, and consistent performance across every project.



5 AXES MACHINING

Advanced **5-axis machining** capabilities enabling complex geometries, high accuracy, and superior surface finish. Designed to deliver precision, efficiency, and consistent quality for demanding industrial applications.



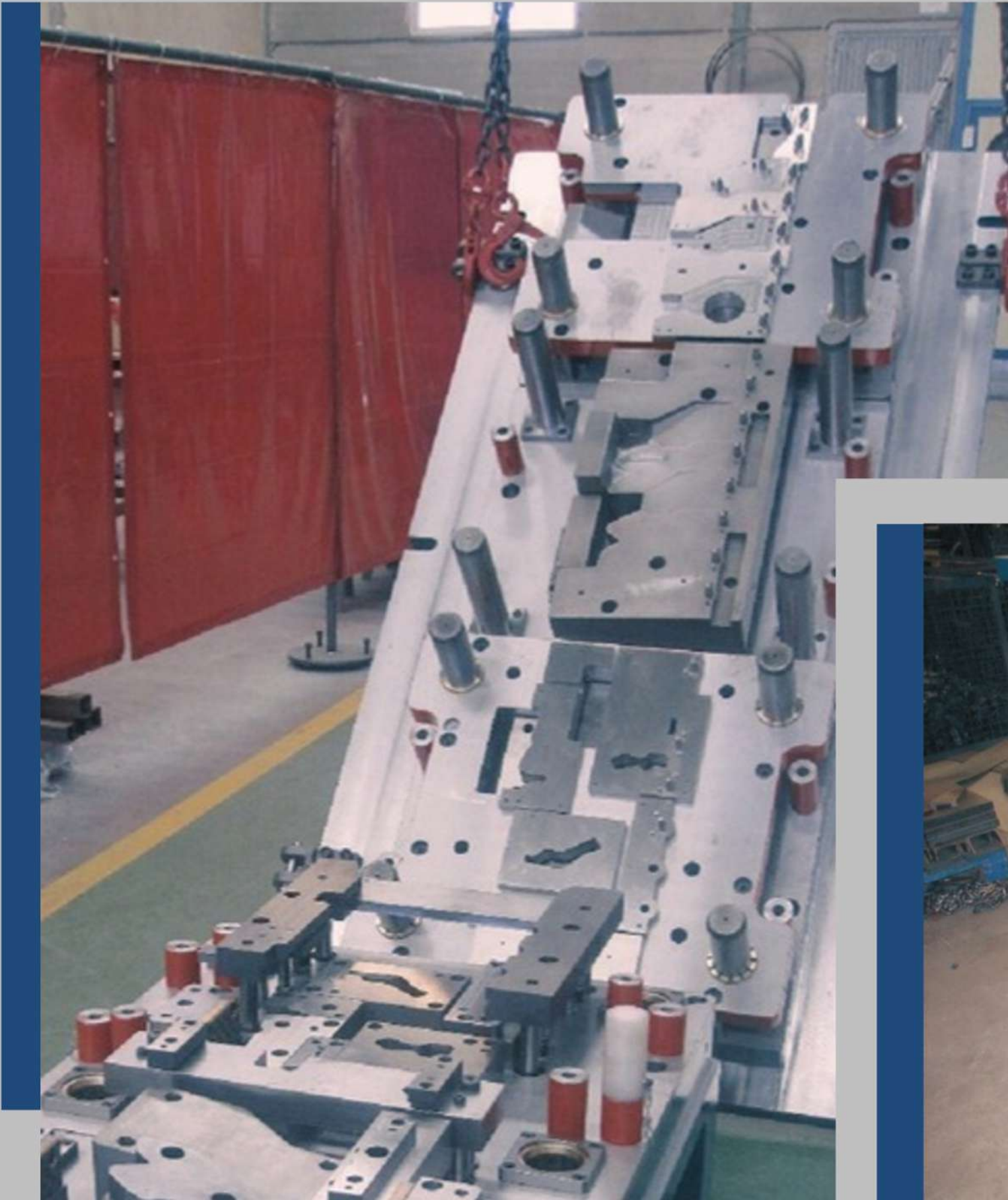
STEEL FABRICATION & ASSEMBLIES



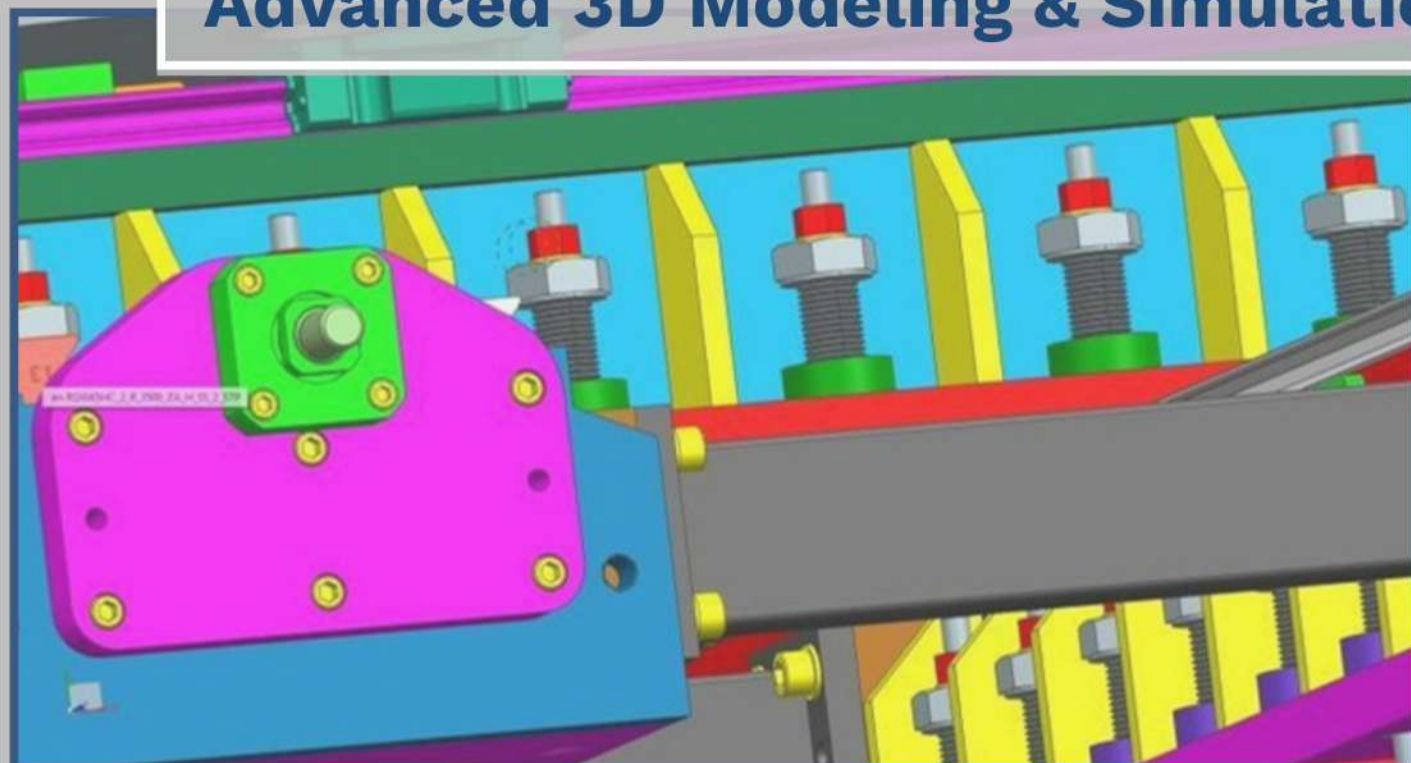
9Mil-INDUSTA delivers comprehensive steel fabrication and metal-mechanical assembly services, ranging from simple structural components to complex industrial machines. All works are executed in accordance with client specifications and international quality standards, ensuring precision, durability, and structural integrity across all applications.

DIE METAL STAMP TOOLING

9Mil – INDUSTA specializes in the development and construction of progressive die metal stamping tooling for industrial manufacturing applications. The division manages the complete tooling process, from initial design and sample reception to testing, validation, and final commissioning.



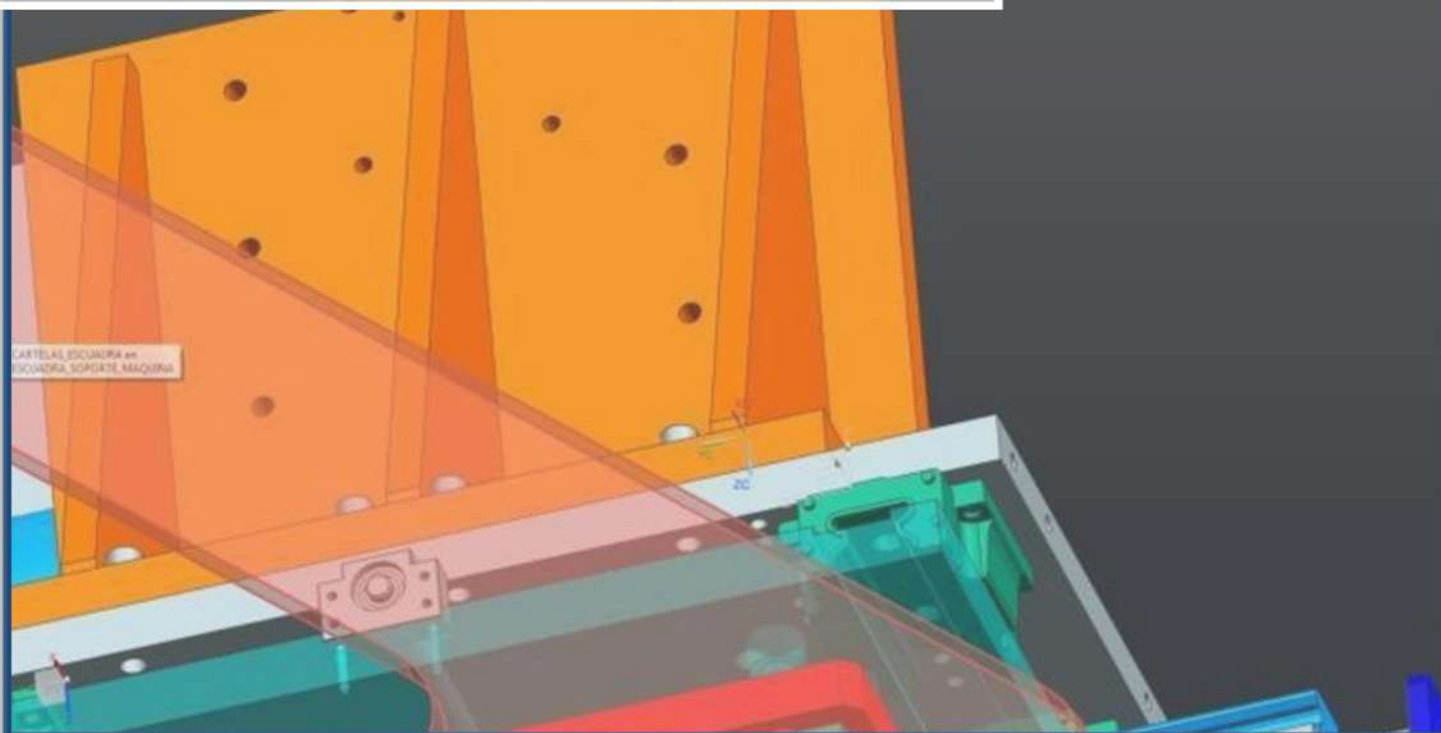
Advanced 3D Modeling & Simulation



Through **Siemens NX**, we develop precise 3D digital models of machines and components, enabling full visualization and performance validation before production.

Interference & Performance Validation

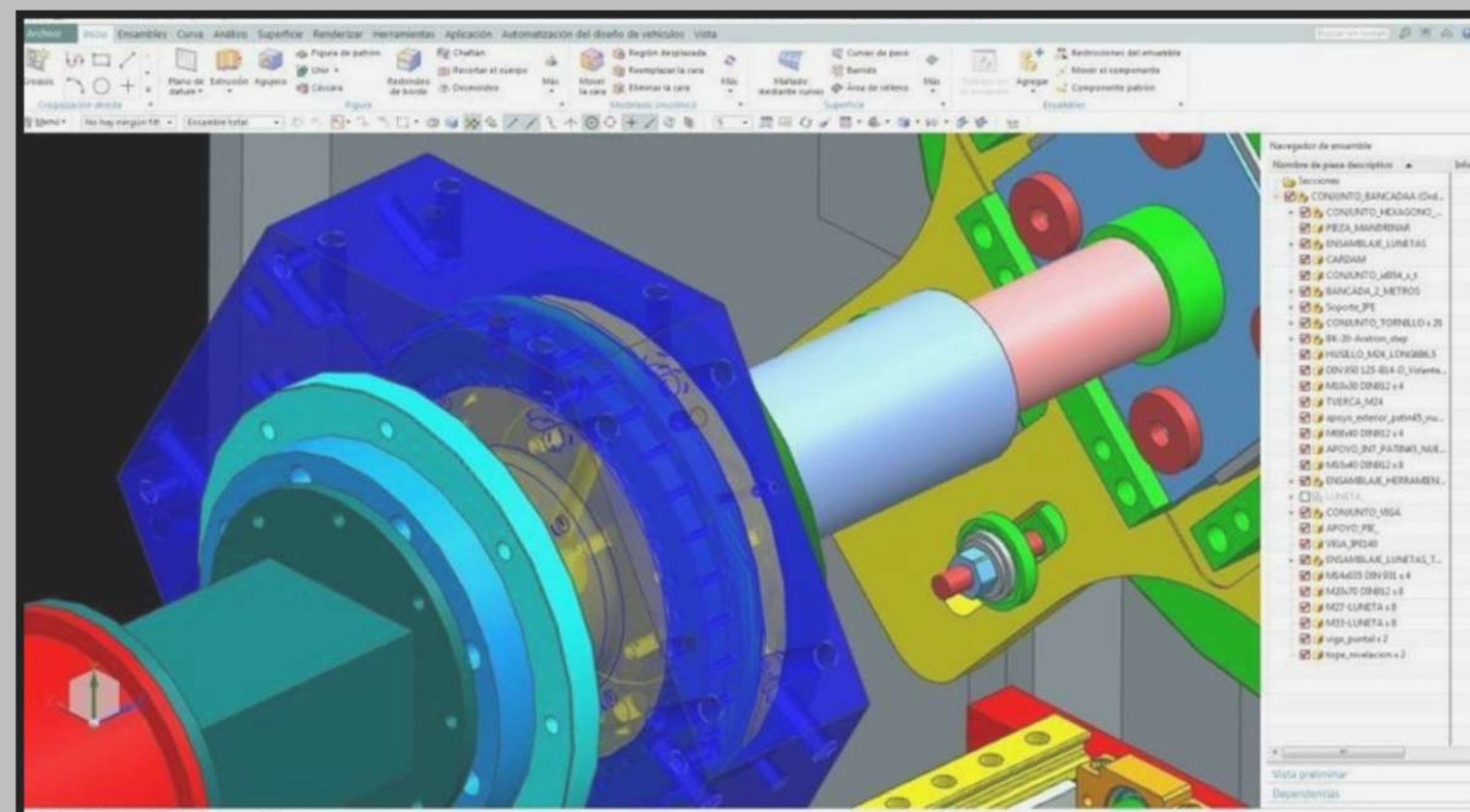
- Analyze movement.
- Detect interferences before manufacturing.
- Ensuring efficiency.
- Reduced risk.
- Optimal performance.



DESIGN & ENGINEERING EXCELLENCE

At **9Mil-INDUSTA**, we operate a fully integrated Design Office where our engineering team designs and develops advanced machines and industrial components.

We support our clients throughout their operational processes using **Siemens NX workstations** for high-precision 3D design and machining solutions **(CAD/CAM)**.



METROLOGY

At **9Mil – INDUSTA**, Metrology is not just measurement — it is precision assurance integrated into every stage of engineering and manufacturing.



We deliver high-accuracy dimensional inspection and quality control services, both at our controlled facilities and on-site, ensuring full compliance with international standards and project specifications.

CONTROLLED MEASUREMENT ENVIRONMENT



Our dedicated metrology laboratories are :

- • Fully isolated against vibrations
- • Temperature and humidity controlled.
- Equipped with specialized lifting and
- handling systems.



ADVANCED MEASUREMENT EQUIPMENT

We utilize state-of-the-art inspection systems, including:

CNC Tridimensional CMM (DEA Image 12.20.10)

Measuring range: 2200 × 1200 × 1000 mm

Romer Sigma 2030 Measuring Arm

Radius capacity up to 1200 mm

Laser Tracker Systems by LEICA & FARO

For large-scale and high-precision alignment and dimensional verification





0038/CPR/MAD/20160130



Cert. N. SGI 6037662



LRE/15085/CL1/0033/16



QUALITY & CERTIFICATIONS

At **9Mil-INDUSTA**, quality is a core commitment, delivered under the standards and expertise of **INDUSTA** Company.

Product and service excellence are our top priorities, ensuring complete customer satisfaction across every project. Operating within **INDUSTA's** certified quality framework, we adhere to internationally recognized standards including **ISO 9001** and **ISO 14001** for quality and environmental management.

We are also qualified for the manufacturing of welded components under **EN 15085** (railway applications) and **EN 1090** for welded aluminium and steel structures in compliance with CE marking requirements.

Transparency

Reliability

Agility



PROJECTS HIGHLIGHT



- **DESIGN AND MANUFACTURING OF PIPING FOR MINERAL GRINDING FOR CERAMIC INDUSTRY**

- **Client**

Micomol - jesa

- **Value**

224,000 €

- **Start / End Date**

Jan/2025 – Apr/2025



SPAIN - MOROCCO

• AERONAUTICAL TOOLING

- Client
M TORRES & OPTIMA INGENIERIA
- Value
812,000 €
- Start / End Date
Sep/2024 – Nov/2025



SPAIN

- **BRIDGE STRUCTURE IN VINAROS**

- **Client**

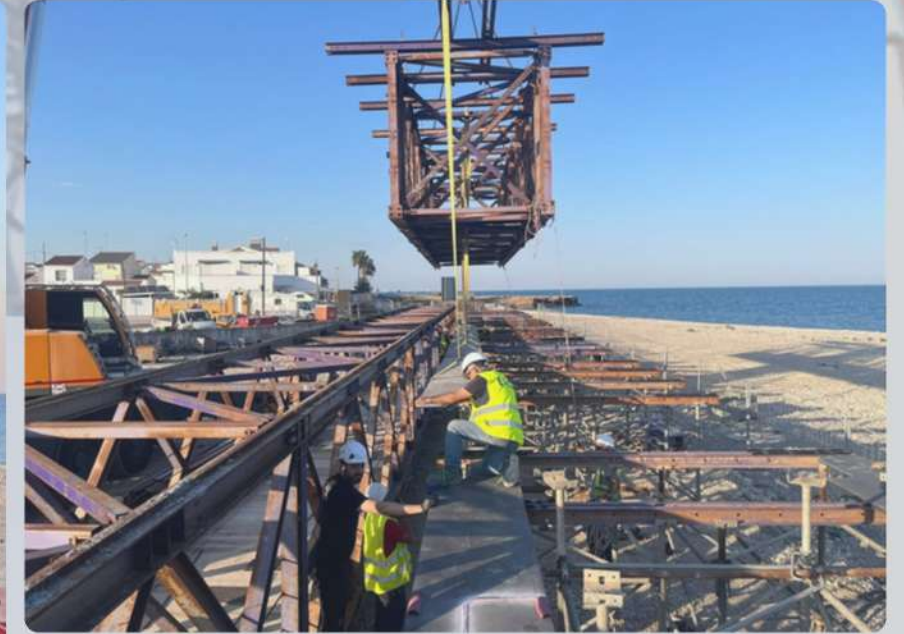
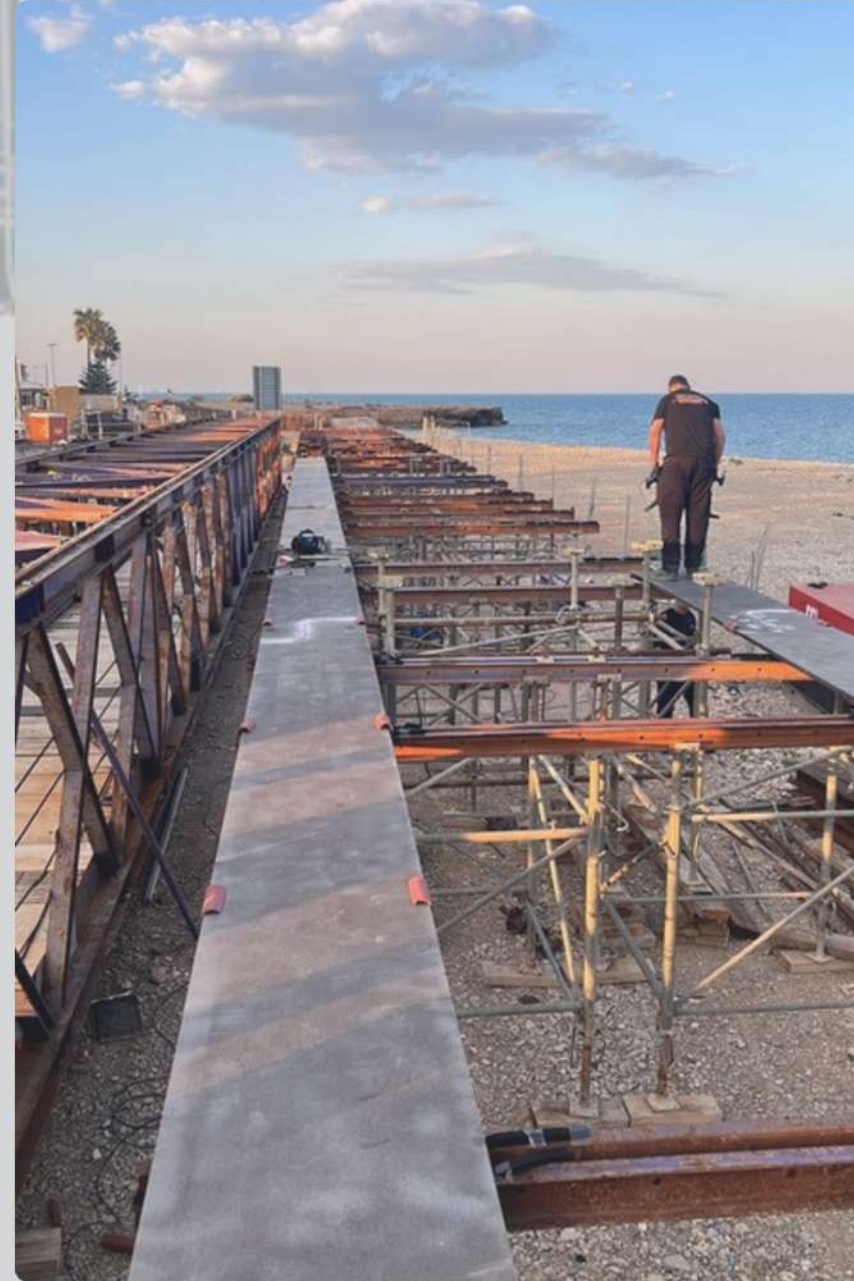
UTE LIC-PANTALLAX

- **Value**

105,000 €

- **Start / End Date**

Feb/2024 – Apr/2024



SPAIN

- **ON SITE MACHINING OF PUMP IN POWER PLANT**

- **Client**
VOITH HYDRO

- **Value**
750,000 €

- **Start / End Date**
Jun/2012 – Jun/2014



AUSTRIA



- **ON SITE MACHINING OF HOLES
IN POWER PLANT**

-
- **Client**
VOITH HYDRO
 - **Value**
80,000 €
 - **Start / End Date**
Jul/2012 – Aug/2012



NORWAY

• BEAMS LIFTING DOWELS

- Client
DRAGADOS
- Value
97,000 €
- Start / End Date
Feb/2017 Jun/2017



SPAIN



- **MAINTENANCE DOORS OF LOCOMOTIVE**

- **Client**
STADLER RAIL

- **Value**
1,280,000 €

- **Start / End Date**
Sep/2024 – Sep/2025



SPAIN / NEW ZEALAND

CONTACT US



+966 55 144 2273 /+966 (11) 827 4102



sales@9mil-group.com



ServCorp Bulding S4,Business Front,Airport
Road, Riyadh,KSA

9Milsa.com



INDUSTRIAL SOLUTIONS REDEFINING INDUSTRY BOUNDARIES

